

**Davidson County**

# **Early Voting Sites (Alternative Plan)**

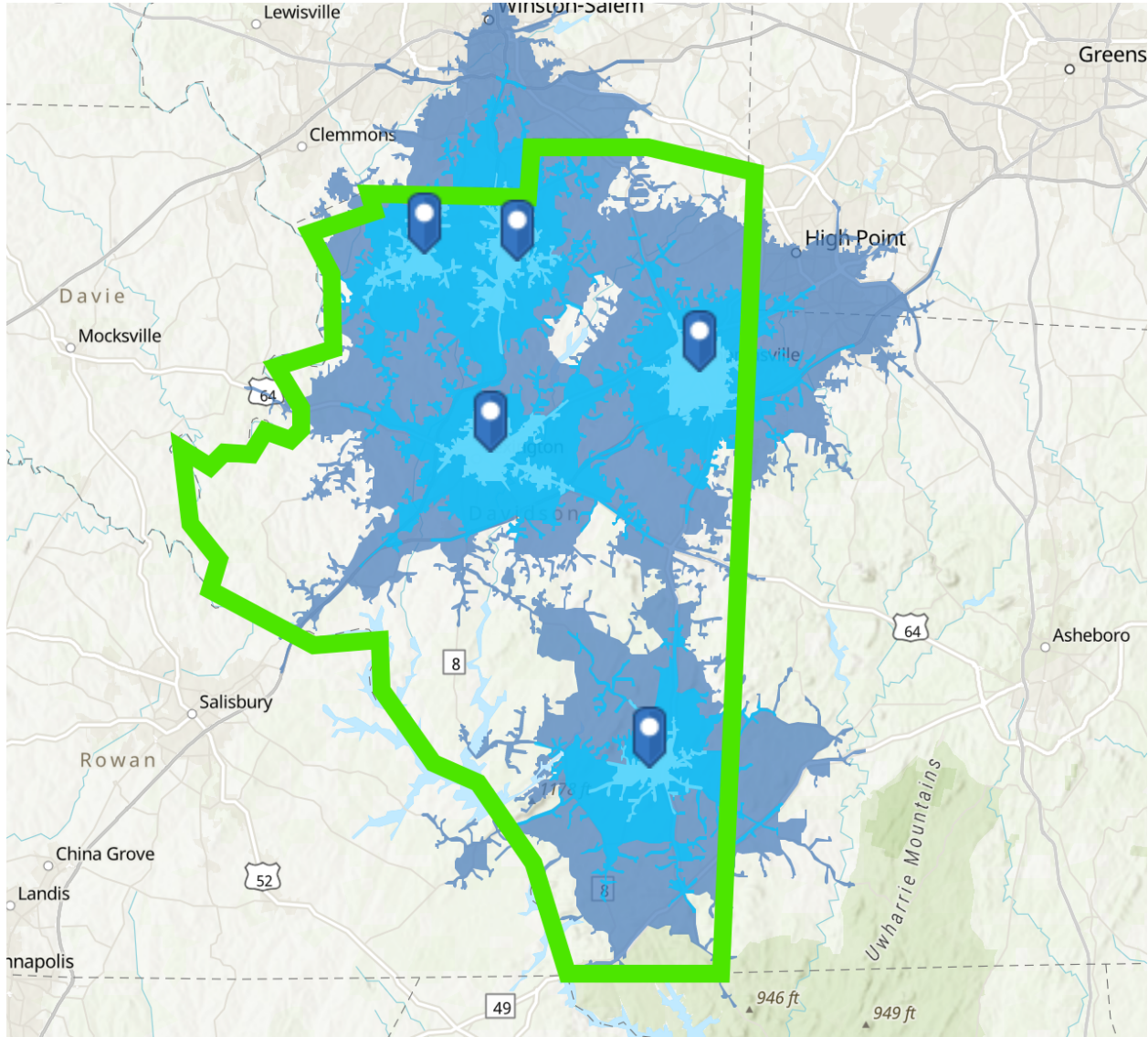


[Table of Contents:](#)

<b>County Analysis</b>	3
<b>Majority Plan Analysis</b>	3-4
• Plan Visual	3
• Site Location(s)	3
• Plan Coverage	4
• Plan Analysis	4
<b>Alternative Plan Analysis</b>	5-10
• Plan Visual	5
• Site Location(s)	5
• Plan Coverage	6
• Plan Analysis	6
• Site(s)	7-10
○ Tyro:	
▪ Visual	7
▪ Location	7
▪ Data	8
○ Spring Hill:	
▪ Visual	9
▪ Location	9
▪ Data	10
<b>Total Data Set</b>	11

# Davidson County Analysis

## Majority Plan:



## Site Locations:

Site Name	Site Address
Denton Library	310 W Salisbury St Denton, NC 27239
Midway United Methodist Church	9795 Old US-52 Lexington, NC 27295
Arcadia Community Center	1281 Community Rd Lexington, NC 27295
Thomasville Library	14 Randolph Street Thomasville, NC 27360
Davidson County Board of Elections	945 N Main Street, Suite A Lexington, NC 27292

## Majority Site(s) Coverage:

	Total Voters	Total D	% D Total	Variance	Total R	% R Total	Variance	Total U	% U Total	Variance
County	114,164	22,190	19.44%		55,030	48.20%		36,296	31.79%	
5 Min Maj. Plan	21,653	6,255	28.89%	9.45%	8,488	39.20%	-9.00%	6,769	31.26%	-0.53%
10 Min Maj. Plan	64,857	14,803	22.82%	3.39%	29,181	44.99%	-3.21%	20,485	31.58%	-0.21%
15 Min Maj. Plan	94,730	18,946	20.00%	0.56%	45,440	47.97%	-0.23%	29,795	31.45%	-0.34%

	Total Voters	Total W	% W Total	Variance	Total B	% B Total	Variance	Total A	% A Total	Variance	Total U	% U Total	Variance	Total O	% O Total	Variance
County	114,164	91,530	80.2%		10,392	9.1%		762	0.7%		8,745	7.7%		2,194	1.9%	
5 Min Maj. Plan	21,653	14,509	67.0%	-13.2%	4,380	20.2%	11.1%	143	0.7%	0.0%	1,886	8.7%	1.1%	592	2.7%	0.8%
10 Min Maj. Plan	64,857	49,025	75.6%	-4.6%	8,279	12.8%	3.7%	488	0.8%	0.1%	5,201	8.0%	0.4%	1,506	2.3%	0.4%
15 Min Maj. Plan	94,730	75,085	79.3%	-0.9%	9,338	9.9%	0.8%	656	0.7%	0.0%	7,283	7.7%	0.0%	1,907	2.0%	0.1%

	Total Voters	Total HL	% HL Total	Variance	Total NL	% NL Total	Variance	Total UN	% UN Total	Variance
County	114,164	2,703	2.4%		83,753	73.4%		27,708	24.3%	
5 Min Maj. Plan	21,653	832	3.8%	1.5%	15,256	70.5%	-2.9%	5,575	25.7%	1.5%
10 Min Maj. Plan	64,857	1,953	3.0%	0.6%	46,894	72.3%	-1.1%	16,010	24.7%	0.4%
15 Min Maj. Plan	94,730	2,381	2.5%	0.1%	69,418	73.3%	-0.1%	22,931	24.2%	-0.1%

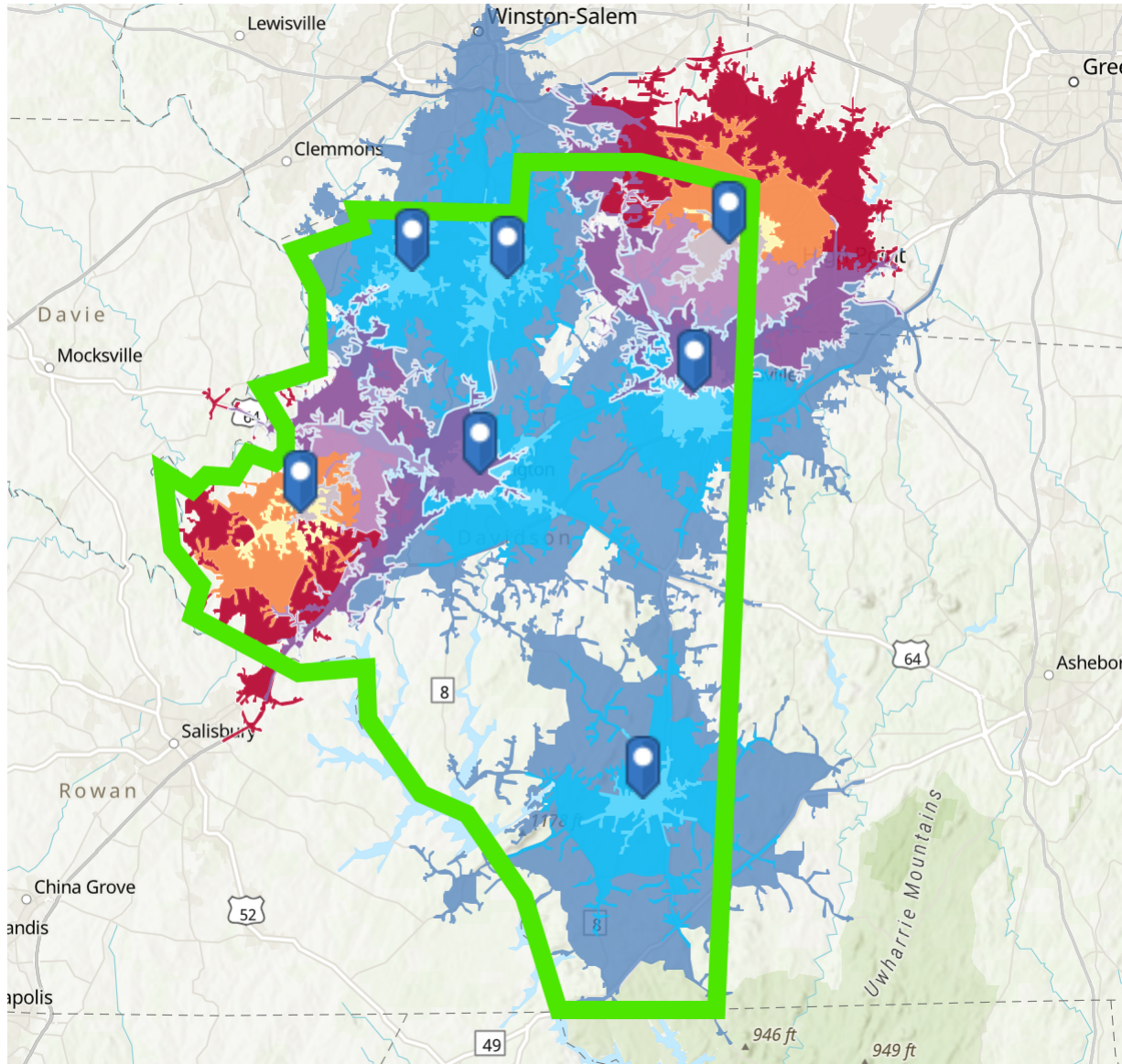
	Total Voters	% of Total
County	114,164	100.0%
5 Min Maj. Plan	21,653	19.0%
10 Min Maj. Plan	64,857	56.8%
15 Min Maj. Plan	94,730	83.0%

**Analysis:** Only 83% of voters are being supplied with sufficient access to early voting sites.

There is a real cost to travel time in terms of voter likelihood. Various studies have measured increase of voter likelihood to not vote between .64% and 5% per mile that they reside from the voting site. There are very real opportunity and fiscal costs to voting from a greater distance. A 30-minute or more commute combined with time to vote, price at the pump and other, harder to gauge factors, have a significant effect on early voting likelihood.

We have identified two sites, whose addition would allow for 91% coverage of Davidson County for early voting access.

**Alternative Plan:**



**Site Locations:**

Site Name	Site Address
Tyro United Methodist Church	4484 S NC Highway 150, Lexington, NC 27295
Spring Hill United Methodist Church	240 Spring Hill Church Road, High Point NC, 27262

## Alternative Plan Coverage:

	Total Voters	Total D	% D Total	Variance	Total R	% R Total	Variance	Total U	% U Total	Variance
County	114,164	22,190	19.44%		55,030	48.20%		36,296	31.79%	
5 Min Maj. Plan	21,653	6,255	28.89%	9.45%	8,488	39.20%	-9.00%	6,769	31.26%	-0.53%
10 Min Maj. Plan	64,857	14,803	22.82%	3.39%	29,181	44.99%	-3.21%	20,485	31.58%	-0.21%
15 Min Maj. Plan	94,730	18,946	20.00%	0.56%	45,440	47.97%	-0.23%	29,795	31.45%	-0.34%
5 Min Alt Plan	2,510	545	28.14%	8.71%	1,039	39.43%	-8.77%	863	31.59%	-0.21%
10 Min Alt Plan	7,929	1,682	22.65%	3.21%	3,431	44.81%	-3.40%	2,773	31.95%	0.16%
15 Min Alt Plan	9,178	1,842	20.01%	0.57%	4,135	47.71%	-0.49%	3,316	31.87%	0.07%

	Total Voters	Total W	% W Total	Variance	Total B	% B Total	Variance	Total A	% A Total	Variance	Total U	% U Total	Variance	Total O	% O Total	Variance
County	114,164	91,530	80.2%		10,392	9.1%		762	0.7%		8,745	7.7%		2,194	1.9%	
5 Min Maj. Plan	21,653	14,509	67.0%	-13.2%	4,380	20.2%	11.1%	143	0.7%	0.0%	1,886	8.7%	1.1%	592	2.7%	0.8%
10 Min Maj. Plan	64,857	49,025	75.6%	-4.6%	8,279	12.8%	3.7%	488	0.8%	0.1%	5,201	8.0%	0.4%	1,506	2.3%	0.4%
15 Min Maj. Plan	94,730	75,085	79.3%	-0.9%	9,338	9.9%	0.8%	656	0.7%	0.0%	7,283	7.7%	0.0%	1,907	2.0%	0.1%
5 Min Alt Plan	2,510	1,919	68.0%	-12.2%	236	19.1%	10.0%	15	0.6%	-0.1%	225	8.7%	1.1%	50	2.7%	0.7%
10 Min Alt Plan	7,929	6,119	75.8%	-4.4%	812	12.5%	3.4%	68	0.9%	0.2%	712	8.1%	0.5%	171	2.3%	0.4%
15 Min Alt Plan	9,178	7,242	79.2%	-0.9%	833	9.8%	0.7%	71	0.8%	0.0%	800	7.8%	0.1%	182	2.0%	0.1%

	Total Voters	Total HL	% HL Total	Variance	Total NL	% NL Total	Variance	Total UN	% UN Total	Variance
County	114,164	2,703	2.4%		83,753	73.4%		27,708	24.3%	
5 Min Maj. Plan	21,653	832	3.8%	1.5%	15,256	70.5%	-2.9%	5,575	25.7%	1.5%
10 Min Maj. Plan	64,857	1,953	3.0%	0.6%	46,894	72.3%	-1.1%	16,010	24.7%	0.4%
15 Min Maj. Plan	94,730	2,381	2.5%	0.1%	69,418	73.3%	-0.1%	22,931	24.2%	-0.1%
5 Min Alt Plan	2,510	71	3.7%	1.4%	1,754	70.4%	-3.0%	635	25.7%	1.4%
10 Min Alt Plan	7,929	197	3.0%	-0.9%	5,777	72.4%	-1.0%	2,095	24.9%	0.6%
15 Min Alt Plan	9,178	219	2.5%	-0.5%	6,735	73.3%	-0.1%	2,364	24.3%	0.1%

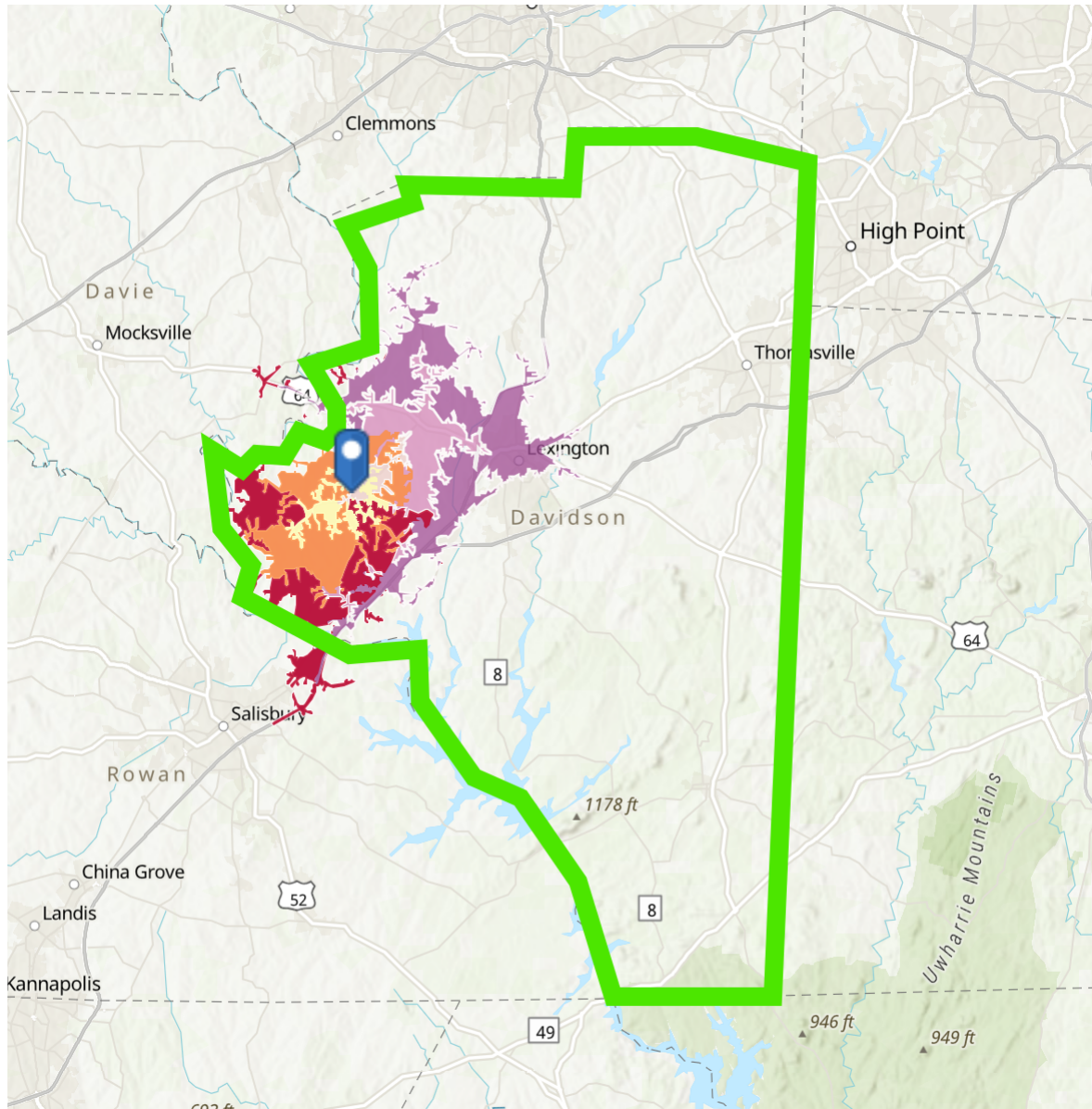
	Total Voters	% of Total
County	114,164	100.0%
5 Min Maj. Plan	21,653	19.0%
10 Min Maj. Plan	64,857	56.8%
15 Min Maj. Plan	94,730	83.0%
5 Min Alt Plan	24,163	21.2%
10 Min Alt Plan	72,786	63.8%
15 Min Alt Plan	103,908	91.0%

**Analysis:** We have identified two additional sites that would increase the total coverage county-wide at the fifteen-minute driving mark from 83% to 91%. A significant increase in coverage and the largest available amongst combinations of previously used voting sites.



**Alternative Voting Site(s):**

**Tyro Site:**



Tyro United Methodist Church	4484 S NC Highway 150, Lexington, NC 27295
------------------------------	--

## Tyro Site Data:

	Total Voters	Total D	% D Total	Variance	Total R	% R Total	Variance	Total U	% U Total	Variance
County	114,164	22,190	19.44%		55,030	48.20%		36,296	31.79%	
5 Min Maj. Plan	21,653	6,255	28.89%	9.45%	8,488	39.20%	-9.00%	6,769	31.26%	-0.53%
10 Min Maj. Plan	64,857	14,803	22.82%	3.39%	29,181	44.99%	-3.21%	20,485	31.58%	-0.21%
15 Min Maj. Plan	94,730	18,946	20.00%	0.56%	45,440	47.97%	-0.23%	29,795	31.45%	-0.34%
5 Min Tyro	1,499	231	28.01%	8.58%	693	39.66%	-8.55%	520	31.48%	-0.31%
10 Min Tyro	3,848	578	22.39%	2.95%	1,924	45.27%	-2.93%	1,332	31.75%	-0.04%
15 Min Tyro	4,684	693	19.75%	0.32%	2,396	48.12%	-0.08%	1,577	31.56%	-0.24%

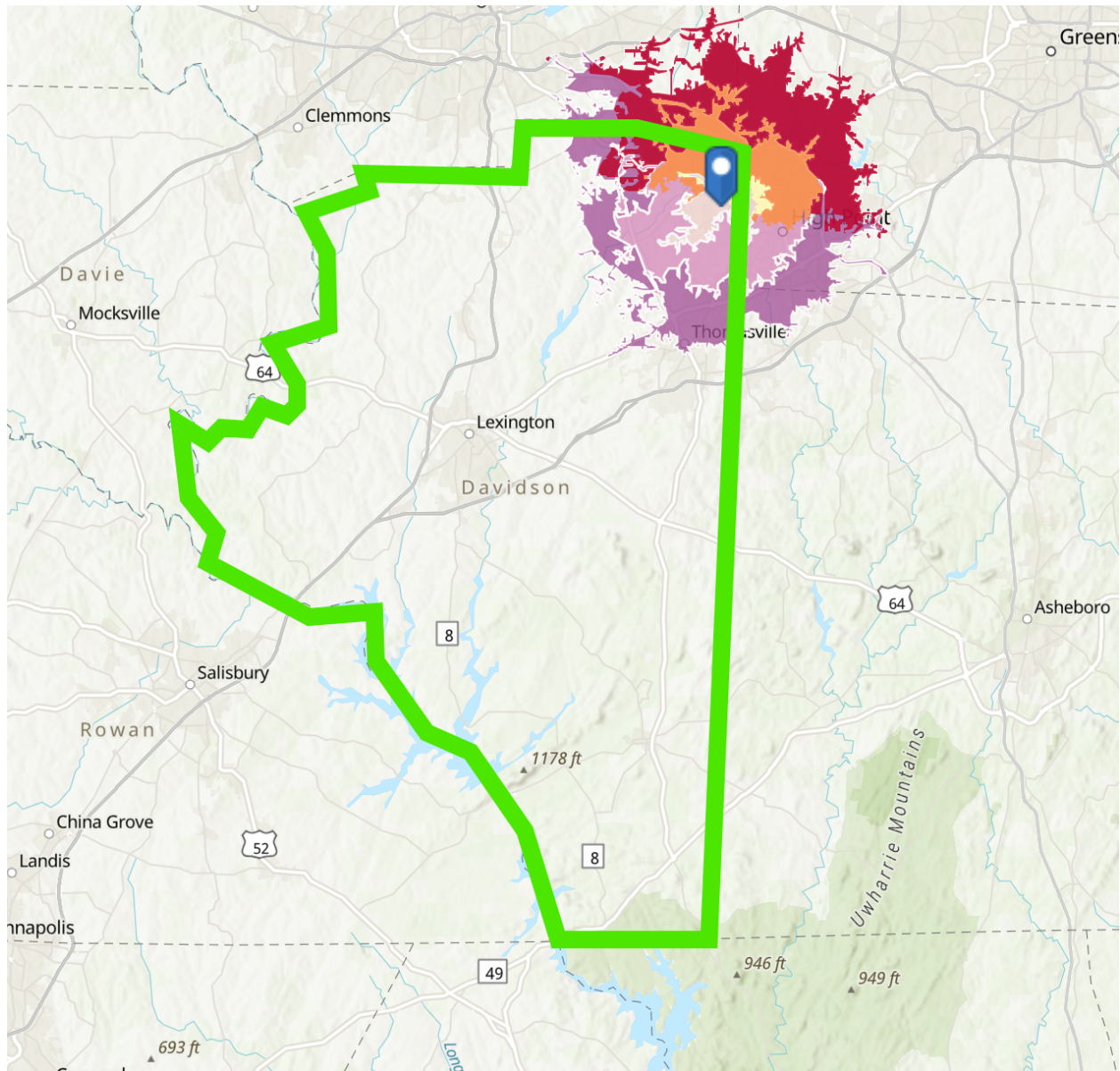
	Total Voters	Total W	% W Total	Variance	Total B	% B Total	Variance	Total A	% A Total	Variance	Total U	% U Total	Variance	Total O	% O Total	Variance
County	114,164	91,530	80.2%		10,392	9.1%		762	0.7%		8,745	7.7%		2,194	1.9%	
5 Min Maj. Plan	21,653	14,509	67.0%	-13.2%	4,380	20.2%	11.1%	143	0.7%	0.0%	1,886	8.7%	1.1%	592	2.7%	0.8%
10 Min Maj. Plan	64,857	49,025	75.6%	-4.6%	8,279	12.8%	3.7%	488	0.8%	0.1%	5,201	8.0%	0.4%	1,506	2.3%	0.4%
15 Min Maj. Plan	94,730	75,085	79.3%	-0.9%	9,338	9.9%	0.8%	656	0.7%	0.0%	7,283	7.7%	0.0%	1,907	2.0%	0.1%
5 Min Tyro	1,499	1,291	68.2%	-11.9%	42	19.1%	10.0%	5	0.6%	0.0%	89	8.5%	0.9%	14	2.6%	0.7%
10 Min Tyro	3,848	3,393	76.3%	-3.9%	138	12.3%	3.1%	10	0.3%	-0.4%	255	7.9%	0.3%	39	2.2%	0.3%
15 Min Tyro	4,684	4,150	79.7%	-0.5%	148	9.5%	0.4%	12	0.3%	-0.5%	314	7.6%	0.0%	46	2.0%	0.0%

	Total Voters	Total HL	% HL Total	Variance	Total NL	% NL Total	Variance	Total UN	% UN Total	Variance
County	114,164	2,703	2.4%		83,753	73.4%		27,708	24.3%	
5 Min Maj. Plan	21,653	832	3.8%	1.5%	15,256	70.5%	-2.9%	5,575	25.7%	1.5%
10 Min Maj. Plan	64,857	1,953	3.0%	0.6%	46,894	72.3%	-1.1%	16,010	24.7%	0.4%
15 Min Maj. Plan	94,730	2,381	2.5%	0.1%	69,418	73.3%	-0.1%	22,931	24.2%	-0.1%
5 Min Tyro	1,499	22	3.7%	1.3%	1,093	70.6%	-2.7%	334	25.5%	1.3%
10 Min Tyro	3,848	57	2.9%	-0.9%	2,870	72.4%	-0.9%	921	24.6%	0.4%
15 Min Tyro	4,684	69	2.5%	-0.5%	3,525	73.4%	0.0%	1,090	24.2%	-0.1%

	Total Voters	% of Total
County	114,164	100.0%
5 Min Maj. Plan	21,653	19.0%
10 Min Maj. Plan	64,857	56.8%
15 Min Maj. Plan	94,730	83.0%
5 Min Tyro	23,152	20.3%
10 Min Tyro	68,705	60.2%
15 Min Tyro	99,414	87.1%



**Spring Hill Site:**



Spring Hill United Methodist Church

240 Spring Hill Church Road, High Point NC,  
27262

## Spring Hill Site Data:

	Total Voters	Total D	% D Total	Variance	Total R	% R Total	Variance	Total U	% U Total	Variance
County	114,164	22,190	19.44%		55,030	48.20%		36,296	31.79%	
5 Min Maj. Plan	21,653	6,255	28.89%	9.45%	8,488	39.20%	-9.00%	6,769	31.26%	-0.53%
10 Min Maj. Plan	64,857	14,803	22.82%	3.39%	29,181	44.99%	-3.21%	20,485	31.58%	-0.21%
15 Min Maj. Plan	94,730	18,946	20.00%	0.56%	45,440	47.97%	-0.23%	29,795	31.45%	-0.34%
5 Min Spring Hill	1,011	314	28.98%	9.55%	346	38.98%	-9.22%	343	31.38%	-0.41%
10 Min Spring Hill	4,081	1,104	23.07%	3.64%	1,507	44.52%	-3.69%	1,441	31.81%	0.01%
15 Min Spring Hill	4,494	1,149	20.25%	0.82%	1,739	47.55%	-0.65%	1,576	31.62%	-0.18%

	Total Voters	Total W	% W Total	Variance	Total B	% B Total	Variance	Total A	% A Total	Variance	Total U	% U Total	Variance	Total O	% O Total	Variance
County	114,164	91,530	80.2%		10,392	9.1%		762	0.7%		8,745	7.7%		2,194	1.9%	
5 Min Maj. Plan	21,653	14,509	67.0%	-13.2%	4,380	20.2%	11.1%	143	0.7%	0.0%	1,886	8.7%	1.1%	592	2.7%	0.8%
10 Min Maj. Plan	64,857	49,025	75.6%	-4.6%	8,279	12.8%	3.7%	488	0.8%	0.1%	5,201	8.0%	0.4%	1,506	2.3%	0.4%
15 Min Maj. Plan	94,730	75,085	79.3%	-0.9%	9,338	9.9%	0.8%	656	0.7%	0.0%	7,283	7.7%	0.0%	1,907	2.0%	0.1%
5 Min Spring Hill	1,011	628	66.8%	-13.4%	194	20.2%	11.1%	10	0.7%	0.0%	136	8.9%	1.3%	36	2.8%	0.8%
10 Min Spring Hill	4,081	2,726	75.1%	-5.1%	674	13.0%	3.9%	58	1.4%	0.8%	457	8.2%	0.5%	132	2.4%	0.5%
15 Min Spring Hill	4,494	3,092	78.8%	-1.4%	685	10.1%	1.0%	59	1.3%	0.6%	486	7.8%	0.2%	136	2.1%	0.1%

	Total Voters	Total HL	% HL Total	Variance	Total NL	% NL Total	Variance	Total UN	% UN Total	Variance
County	114,164	2,703	2.4%		83,753	73.4%		27,708	24.3%	
5 Min Maj. Plan	21,653	832	3.8%	1.5%	15,256	70.5%	-2.9%	5,575	25.7%	1.5%
10 Min Maj. Plan	64,857	1,953	3.0%	0.6%	46,894	72.3%	-1.1%	16,010	24.7%	0.4%
15 Min Maj. Plan	94,730	2,381	2.5%	0.1%	69,418	73.3%	-0.1%	22,931	24.2%	-0.1%
5 Min Spring Hill	1,011	49	3.9%	1.5%	661	70.2%	-3.1%	301	25.9%	1.7%
10 Min Spring Hill	4,081	140	3.0%	-0.8%	2,907	72.2%	-1.1%	1,174	24.9%	0.7%
15 Min Spring Hill	4,494	150	2.6%	-0.5%	3,210	73.2%	-0.2%	1,274	24.4%	0.1%

	Total Voters	% of Total
County	114,164	100.0%
5 Min Maj. Plan	21,653	19.0%
10 Min Maj. Plan	64,857	56.8%
15 Min Maj. Plan	94,730	83.0%
5 Min Spring Hill	22,664	19.9%
10 Min Spring Hill	68,938	60.4%
15 Min Spring Hill	99,224	86.9%

### Davidson County Data:

	Total Voters	Total D	% D Total	Variance	Total R	% R Total	Variance	Total U	% U Total	Variance
County	114,164	22,190	19.44%		55,030	48.20%		36,296	31.79%	
5 Min Maj. Plan	21,653	6,255	28.89%	9.45%	8,488	39.20%	-9.00%	6,769	31.26%	-0.53%
10 Min Maj. Plan	64,857	14,803	22.82%	3.33%	29,181	44.99%	-3.21%	20,485	31.58%	-0.21%
15 Min Maj. Plan	94,730	18,946	20.00%	0.56%	45,440	47.97%	-0.23%	29,795	31.45%	-0.34%
5 Min Alt Plan	2,510	545	28.14%	8.71%	1,039	39.43%	-8.77%	863	31.59%	-0.21%
10 Min Alt Plan	7,929	1,682	22.65%	3.21%	3,431	44.81%	-3.40%	2,773	31.95%	0.16%
15 Min Alt Plan	9,178	1,842	20.01%	0.57%	4,135	47.71%	-0.49%	3,316	31.87%	0.07%

	Total Voters	Total W	% W Total	Variance	Total B	% B Total	Variance	Total A	% A Total	Variance	Total U	% U Total	Variance	Total O	% O Total	Variance
County	114,164	91,530	80.2%		10,392	9.1%		762	0.7%		8,745	7.7%		2,194	1.9%	
5 Min Maj. Plan	21,653	14,509	67.0%	-13.2%	4,380	20.2%	11.1%	143	0.7%	0.0%	1,886	8.7%	1.1%	592	2.7%	0.8%
10 Min Maj. Plan	64,857	49,025	75.6%	-4.6%	8,279	12.8%	3.7%	488	0.8%	0.1%	5,201	8.0%	0.4%	1,506	2.3%	0.4%
15 Min Maj. Plan	94,730	75,085	79.3%	-0.9%	9,338	9.9%	0.8%	656	0.7%	0.0%	7,283	7.7%	0.0%	1,907	2.0%	0.1%
5 Min Alt Plan	2,510	1,919	68.0%	-12.2%	236	19.1%	10.0%	15	0.6%	-0.1%	225	8.7%	1.1%	50	2.7%	0.7%
10 Min Alt Plan	7,929	6,119	75.8%	-4.4%	812	12.5%	3.4%	68	0.9%	0.2%	712	8.1%	0.5%	171	2.3%	0.4%
15 Min Alt Plan	9,178	7,242	79.2%	-0.9%	833	9.8%	0.7%	71	0.8%	0.0%	800	7.8%	0.1%	182	2.0%	0.1%

	Total Voters	Total HL	% HL Total	Variance	Total NL	% NL Total	Variance	Total UN	% UN Total	Variance
County	114,164	2,703	2.4%		83,753	73.4%		27,708	24.3%	
5 Min Maj. Plan	21,653	832	3.8%	1.5%	15,256	70.5%	-2.9%	5,575	25.7%	1.5%
10 Min Maj. Plan	64,857	1,953	3.0%	0.6%	46,894	72.3%	-1.1%	16,010	24.7%	0.4%
15 Min Maj. Plan	94,730	2,381	2.5%	0.1%	69,418	73.3%	-0.1%	22,931	24.2%	-0.1%
5 Min Alt Plan	2,510	71	3.7%	1.4%	1,754	70.4%	-3.0%	635	25.7%	1.4%
10 Min Alt Plan	7,929	197	3.0%	-0.9%	5,777	72.4%	-1.0%	2,095	24.9%	0.6%
15 Min Alt Plan	9,178	219	2.5%	-0.5%	6,735	73.3%	-0.1%	2,364	24.3%	0.1%

	Total Voters	% of Total
County	114,164	100.0%
5 Min Maj. Plan	21,653	19.0%
10 Min Maj. Plan	66,857	56.8%
15 Min Maj. Plan	94,730	83.0%
5 Min Alt Plan	24,163	21.2%
10 Min Alt Plan	72,786	63.8%
15 Min Alt Plan	103,908	91.0%